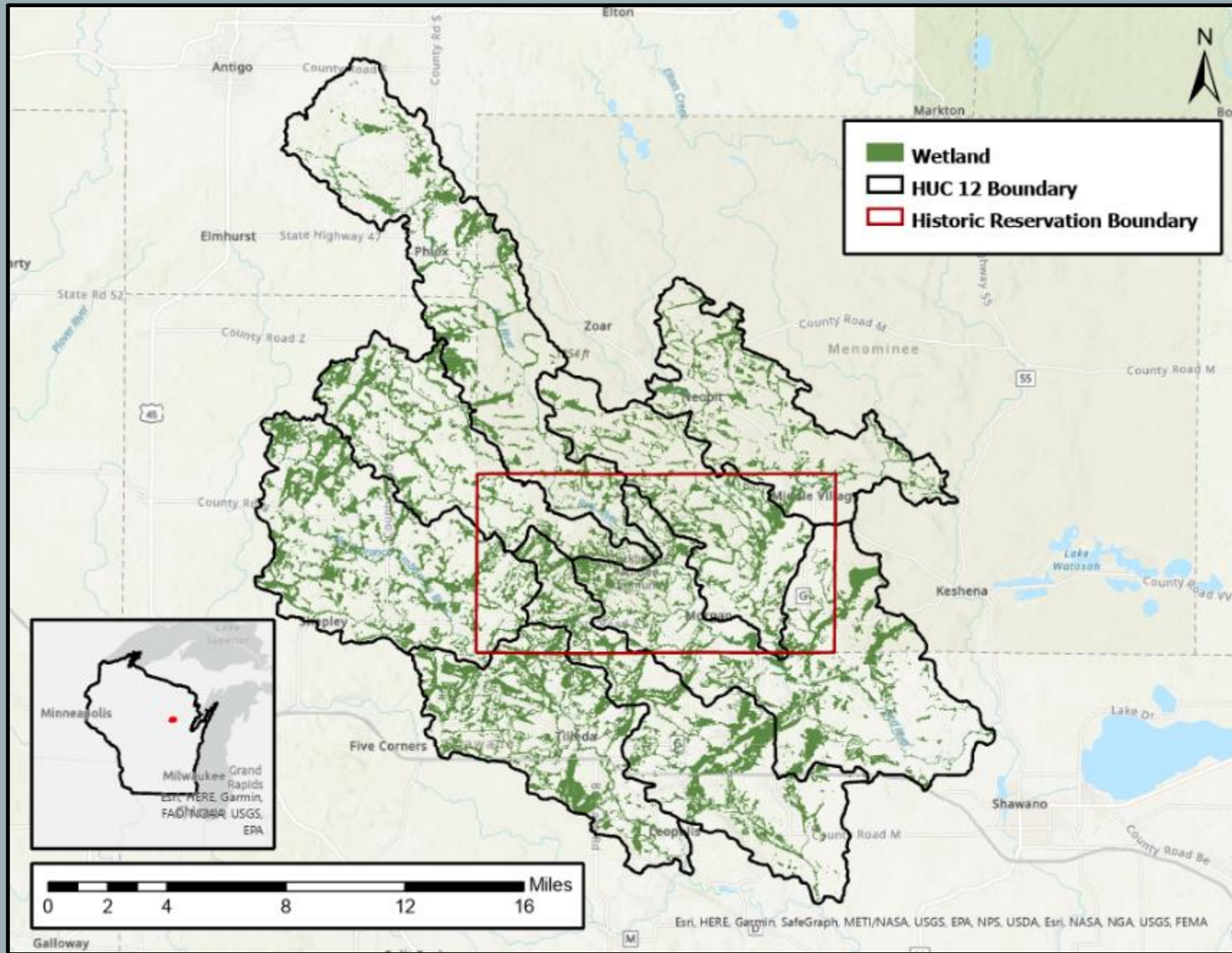


**The Stockbridge-Munsee Community's  
Approach to Funding and Sustaining a  
Tribal Wetland Program**

Mike Jones

Wetland Specialist

Stockbridge-Munsee Community (WI)



# EVOLUTION OF THE SMC WETLAND PROGRAM

Three Major Phases:

- Early Wetland Work (Pre-1992)
- Water Resources Program Development (1992–2011)
- Formal Wetland Program (2011–Present)

# EARLY WETLAND WORK

## Pre-1992

- Very limited funds and capacity
- Conservation Wardens
- Impoundments for waterfowl (Circle of Flight)
- Wild rice
- Beaver management





# WATER RESOURCES PROGRAM DEVELOPMENT

1992–2011

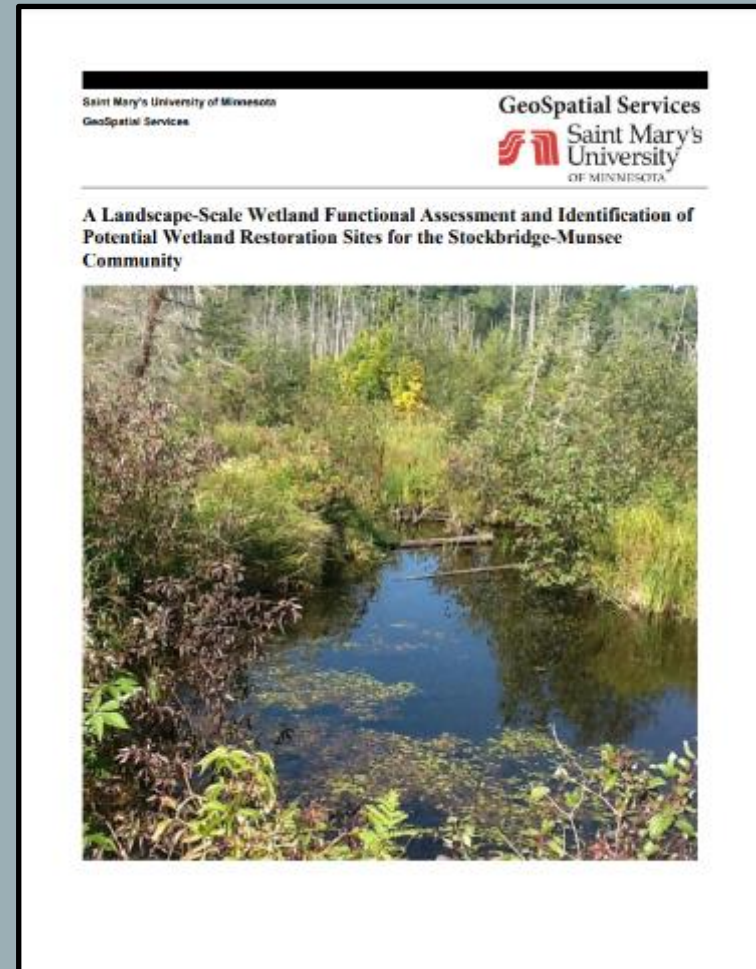
- EPA GAP
- CWA 106 Program established
- Full-time Hydrologist in 2001
- Wetlands were minor component
- Wetland mapping, restoration



# FORMAL WETLAND PROGRAM

2011–Present

- 2011 Wetland Program Development Grant (WPDG)
- First Wetland Program Plan (WPP) and wetland specialist
- Functional assessment and PRWs
- WPDGs main funding source





# SUSTAINABLE FUNDING CHALLENGES

- **No recurring base funding**
- Tribal contribution limited
- WPDG
  - Competitive
  - Short-term projects
  - Restoration usually not allowed
  - **Not for ongoing/routine work**



## SUSTAINABLE FUNDING CHALLENGES

- Hardest to fund staff and routine work
  - Staff turnover = delays, inconsistency, extra hiring and training costs
  - Develop a program to watch it fail
- Grant applications and approvals are time-consuming



# SMC'S APPROACH TO SUSTAINABILITY

PARTNERSHIPS

DIVERSIFIED  
FUNDING



# PARTNERSHIPS

- Pool resources (money, staff, supplies, expertise)
- More people = flexibility
- Access to additional funding sources
- Increase efficiency = lower costs
- Think outside the box

# PARTNERSHIPS

- Within tribe
  - Wildlife and fisheries
  - Land management
  - Forestry
  - Cultural resources/historic preservation
  - Roads
  - Emergency management
  - Education
- Outside partners
  - Federal agencies (EPA, BIA, USACE, USFWS, USDA, USFS)
  - State agencies
  - Local governments
  - Intertribal consortia (WTCAC)
  - Tribal wetland working groups
  - Colleges and universities
  - Landowner associations
  - NGOs

# PARTNERSHIPS



Source: WTCAC



Source: WTCAC



## DIVERSIFIED FUNDING

- WPDG
- CWA 106/319/GAP
- BIA grants or end-of-year funding
- USFWS
- Wisconsin DNR
- USDA
  - NRCS (EQIP)
  - FSA (CRP)
- USACE (design and engineering support)
- NGOs
- Regional initiatives (GLRI)
- Tribal contribution
  - Grant matches
  - Staff costs
  - Split between departments

# DIVERSIFIED FUNDING

- Throw a lot of darts!
- Shovel-ready projects
- Promote program to build support
  - Demonstrate value and flexibility
- Contracted vs. In-House
- Be creative





## EXAMPLE: BLACK ASH UNDERPLANTING





# EXAMPLE: AOP IMPROVEMENT





# OTHER TIPS

- Write WPP with funding in mind
- Cross-training and capacity building
  - Keep funds in-house
  - Retain staff
- Scout WPDG funding pools
- Reduce Tribal match
- Utilize cheap labor

