

# Wetland Mapping Consortium

**Creating a Value-Added Wetlands Layer:  
Enhancing the Utility of Wetland  
Mapping in Montana**

# Welcome!

If you have any technical difficulties during the webinar you can send us



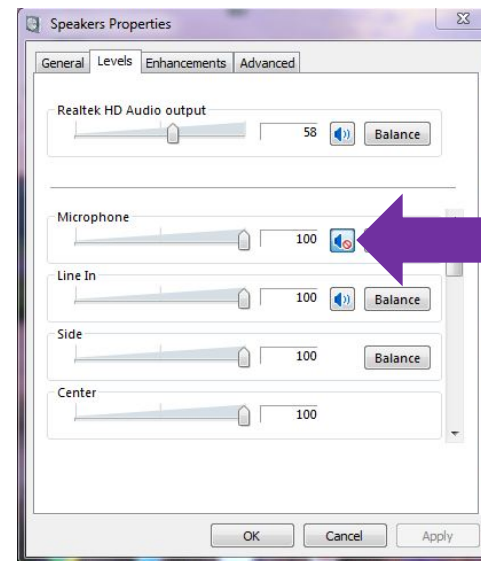
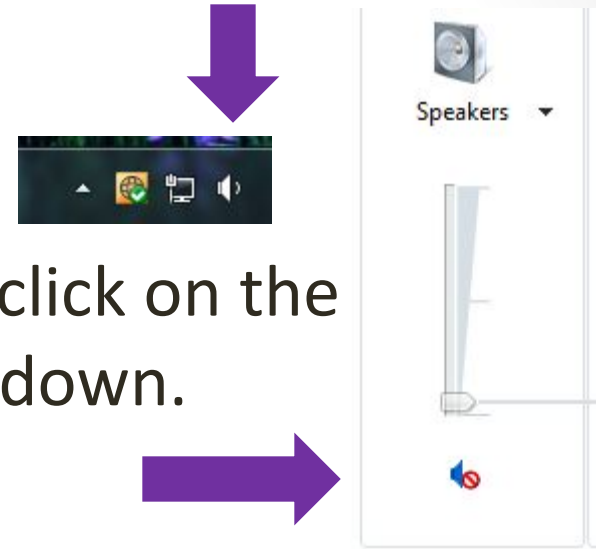
a question in the webinar question box or call Laura at (207) 892-3399 during the webinar.

# Audio

## Telephone Users

Click on the speaker icon on the bottom right of your screen and click on the speaker to mute or slide the bar down.

Click on Speakers, then click on the icon next to microphone to mute.



# Agenda



- **Welcome and Introductions (5 minutes)**
- **WMC Webinar Schedule/Recordings (5 minutes)**
- **Saving NWI – Next Steps (10 minutes)**
- **Creating a Value-Added Wetlands Layer:  
Enhancing the Utility of Wetland Mapping in  
Montana (45 minutes)**
- **Questions and Discussion (20 minutes)**
- **Wrap up (5 minutes)**

# ASWM Webinar Series Moderator



Marla Stelk,  
Policy Analyst

Association of  
State Wetland  
Managers

# Presenter

Karen Newlon,  
Ecologist  
Montana Natural  
Heritage Program








# Webinar Schedule/Recordings

Association of State Wetland Managers - Protecting the Nation's Wetlands.



**What's New:**

- White House Enviro Council Chairwoman Sutley Stepping Down
- Enbridge Could Be Forced to Boost Pipeline Safety in MI
- Bay water quality still falling short
- Wetland Aquaculture Potential in Spain Highlighted
- Ohio ERAC issues wetlands/stream impact permit decision
- Wetland Breaking News - Current Issue

Home ASWM I Am... Wetlands Science Wetland Programs Watersheds Law News Blog

Home > ASWM > ASWM Webinars/Calls

**Main Menu**

- Join/Renew
- Donate
- Wetlandkeepers Initiative
- Volunteer
- Sign Up for WBN
- Sponsor WBN
- Latest News
- Compleat Wetlander
- Note from Board Chair
- Welcome Letter
- Message from the Founder
- Contact Us

**ASWM Menu**

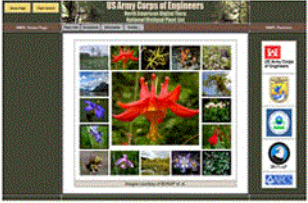
- About ASWM
- ASWM Projects
- Do Business With Us
- Support Wetlandkeepers
- Volunteer
- Contact Us
- Publications
- ASWM Webinars/Calls

Login Required:

- ASWM Board (Login Req.)
- Newsletter
- Insider's Edition

**ASWM Webinars/Conference Schedule**

The Association of State Wetland Managers holds webinars on various topics, most of which relate to a specific project and work group. In addition, ASWM holds webinars as part of its members' webinar series on topics of interest to members. Please click on the webinar group name below for more details about individual webinars. In all cases, if you have any questions about registering for a webinar, please contact Laura at [laura@aswm.org](mailto:laura@aswm.org). If you are a member, and you missed a webinar that was part of the members' webinar series, please contact us. We will post the recordings of the webinars going ahead.



*A presentation given during a webinar.*

**Special ASWM Webinar - Koontz v. St. Johns River Water Management District: What Happened and Where Do We Go From Here** - Wednesday, July 17, 2013 - 3:00 p.m. ET - To view Webinar and PowerPoint Presentations, [click here](#).

**Members' Wetland Webinar Series**

[Future](#) [Past: Members Only](#) [Past: Nonmembers](#)

**Natural Floodplain Function Alliance (NFFA)** [Future](#) [Past](#)

**Wetland Mapping Consortium (WMC)** [Future](#) [Past](#)

**Wetland Restoration Permitting Project**

**Wetland Program Plans Project** [Past](#)

**Stream Identification/Delineation/Mitigation Project** [Future](#) [Past](#)



# WMC Webinars Posted

Tuesday, September 17, 2013

- Mapping "Natural" Floodplains, Kevin Coulton, cbec, eco engineering, inc.
- Soil Survey Information for Floodplain Mapping, Dave Hoovers and Sharon Waltman, Natural Resources Conservation Service

Ralph Tiner's "NWI+ Data: What It Is & How It's Being Used" PDF only – video in progress



Part 1: Introduction  
David Hoover, NRCS



Part 2: Sharon Waltman,  
USDA



Part 3: Kevin Coulton  
cbec, eco engineering,  
inc.



Part 4: Questions &  
Answers


# Future Schedule - 2014

- **January 22:** The evolution of NWI mapping and how it has changed: a comparison of old and new methodologies - strengths and weaknesses
- **February 19:** Mapping forested wetland inundation with the Landsat historic record and mapping the relationship between inundation and stream flow
- **March:** ASWM Winter Meeting Workshop, March 4-6 2014  
(Mapping sessions available for remote participants)
- **April 16:** NWI Update in Minnesota: How a state-wide update was possible and new techniques for implementation
- **May 21:** TBD
- **June 18:** Presenting a new method to correct LIDAR intensity for evergreen vegetation and provide highly accurate maps of inundation in forested wetlands
- **July 16:** Using SURRGO data to identify potentially restorable soils AND a presentation of a case study on use of potentially restorable wetlands data in Wisconsin

# More Potential 2014 Webinar Topics

- How to use time series Landsat data to find disturbance areas
- The use of elevation surface derivatives for mapping wetlands
- Processing the LIDAR data so that it can be interpreted
- How to use time series Landsat data to detect changes in vegetation: wetlands vs. nonwetlands
- How to use publicly available data (specifically Google Earth) in photo interpretation of wetlands
- Using GeoNet for stream mapping
- Mapping wetlands in the Great Lakes: using best available data within a normalization framework and a closer look at Canadian wetland mapping approaches

# Future of NWI Discussion



**U.S. Fish & Wildlife Service**  
**National Wetlands Inventory**

Fisheries and Habitat Conservation

Menu: [Home](#) | [Wetlands Data](#) | [Status and Trends](#) | [Wetlands Layer](#) | [Other Topics](#) | [NWI Program](#) | [Contact Information](#)


### The National Wetlands Inventory Program

The National Wetlands Inventory Program (NWI) has been producing wetland maps and geospatial wetland data for the United States since the mid-1970s. The focus on the program has been on two fronts: 1) map or digital database preparation and delivery to the public, and 2) projecting and reporting on national wetland trends using a probability-based sampling design. The status of mapping has been made available through various media throughout the program's 30-year history (e.g., state atlases, regional status maps, and now through the internet via the Wetlands Mapper online tool).

[Regional Wetlands Coordinators](#) are located in each of the Service's regions. The [National Standards and Support Team](#) is located in Madison, WI, and is the home of the [Wetlands Geodatabase](#) as well as staff providing science and support for all geospatial applications of wetlands data. The [Wetlands Mapper](#) serves as the data discovery mechanism and is managed in cooperation with the U.S. Geological Survey in Madison, WI.

The [U.S. Fish and Wildlife Service](#) (Service) is the principal Federal agency that provides information to the public on the extent and status of the Nation's wetlands. The agency has developed a series of topical maps to show wetlands and deepwater habitats. This geospatial information is used by Federal, State, and local agencies, academic institutions, and private industry for management, research, policy development, education and planning activities. Digital data can be viewed and downloads are available through the [Wetlands Mapper](#).


The [Fish and Wildlife Service](#) is headquartered in Arlington, Virginia, and responsibility for the geospatial wetlands data falls to the Division of Habitat and Resource Conservation.



### NWI Program Overview

The National Wetlands Inventory (NWI) Program was established by the US Fish and Wildlife Service (Service) in 1974 to conduct a nationwide inventory of U.S. wetlands to provide its biologists and others with information on the distribution of wetlands to aid in wetland conservation efforts.

- [Click here to view the Program Overview](#)



[NWI Staff Directory](#)

[Regional Wetlands Coordinators:  
Contacts & Websites](#)

U.S. Fish and Wildlife Service  
**Branch of Resource and Mapping Support**  
4401 N. Fairfax Drive, Room 830  
Arlington, VA 22203  
Phone: 703-358-2161 Fax: 703-358-1869

U.S. Fish and Wildlife Service  
**National Standards and Support Team**  
505 Science Drive  
Madison, WI 53711-1060

# Actions Underway

- Shell letter to send to FWS Regions, Headquarters, and others forwarded to WMC participants – will be forwarded to other interested organizations e.g. AFWA, JVCs, ASFPM, NEIWPC, WWA, DU
  - Mailing/Contact list included
  - Short summary of uses with examples and user groups included
  - A few examples of State Wetland Mapping Summaries included (you can print your own of interest from ASWM One-Stop Mapping website)
- Asking WMC members to use shell letter or create own letter of support and to forward to other interested parties
- Please cc Wetland Regional Coordinators when sending out letters
- Joint letter to be developed – let us know if interested



# Karen Newlon

It will take us a few moments to make the switch....



# Discussion



# Thank You for Participating!

