

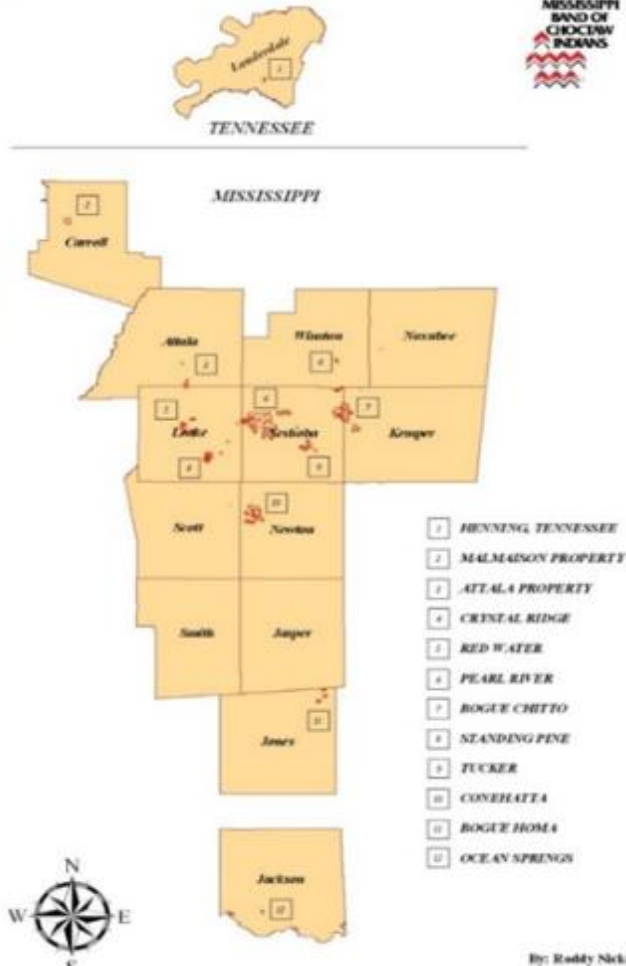
*Wetlands Conservation
Program Development*



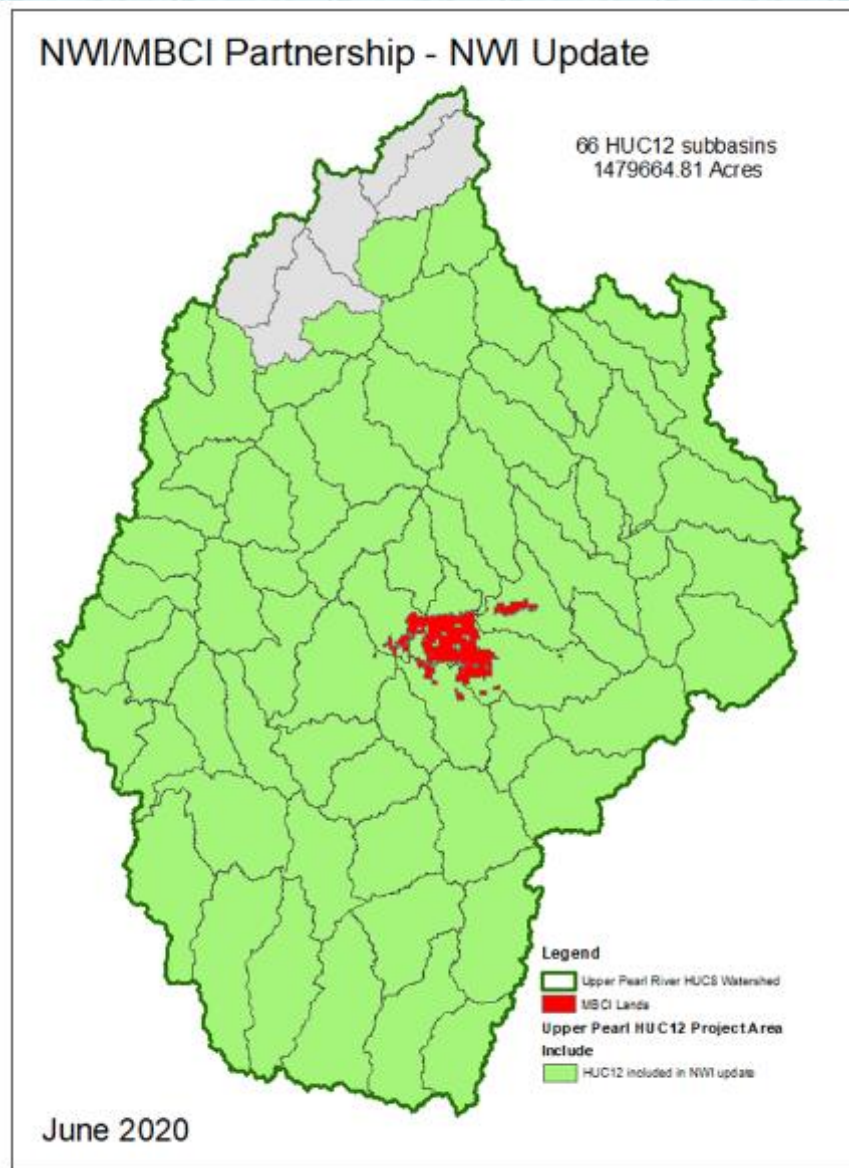
MISSISSIPPI BAND OF
CHOCTAW INDIANS

Mississippi Band of Choctaw Indians

13,500 acres of Wetlands



NWI Update Area



- Upper Pearl River Watershed
- 66 HUC 12s
- 1.5 million acres



Wetlands Program Plan Activities

- NWI Update HUC 8 (66 HUC12 Sub-basins)
- LLWW
- Functional Assessment
- Web Map Viewer
- TEK Collection and Rapid Assessment Method Development
- Biodiversity Inventory at Nanih Waiya Mound



Project Overview

- Fish and Wildlife Service
 - NWI Update Cost Share
- Ducks Unlimited
 - NWI for HUC 8
 - LLWW on MBCI lands
 - Map Viewer
 - RAM development and software
- MBCI
 - Ancillary data (drone imagery)
 - Functional assessment table development
 - Field verification



NWI Update Improves Accuracy



LLWW

Developed by the FWS to provide HGM descriptors compatible with NWI

- **L**andscape position,
- **L**andform,
- **W**ater Flow Path,
- **W**aterbody Type



Figure 1. Application of LLWW descriptors to a region with nontidal wetlands. Landscape positions: LR – lotic river, LS – lotic stream, LE – lentic, and TE – terrene; Landforms: BA – basin, FR – fringe, FP – floodplain, SL – Slope; Water flow paths: OU – outflow, IS – isolated, TH – throughflow, BI – bidirectional-nontidal; other descriptors: pd – pond (association), hw – headwater; Waterbodies: PD – pond, LK – lake. Note: Landscape position can be added to lakes and ponds if desirable.

Functional Assessment

- Flood Water Storage
- Streamflow Maintenance
- Nutrient Transformation
- Sediment and Particulate
- Retention
- Shoreline Stabilization
- Fish Habitat
- Waterfowl and Bird Habitat
- Shorebird Habitat
- Amphibian Habitat
- Ground Water Influence



Web Tool: Attributes and Custom Filters

Compiled by Ducks Unlimited, Inc.

Find address or place

Filter

- Water Storage High Potential
- Fish Habitat High Potential

(1 of 2)

1102

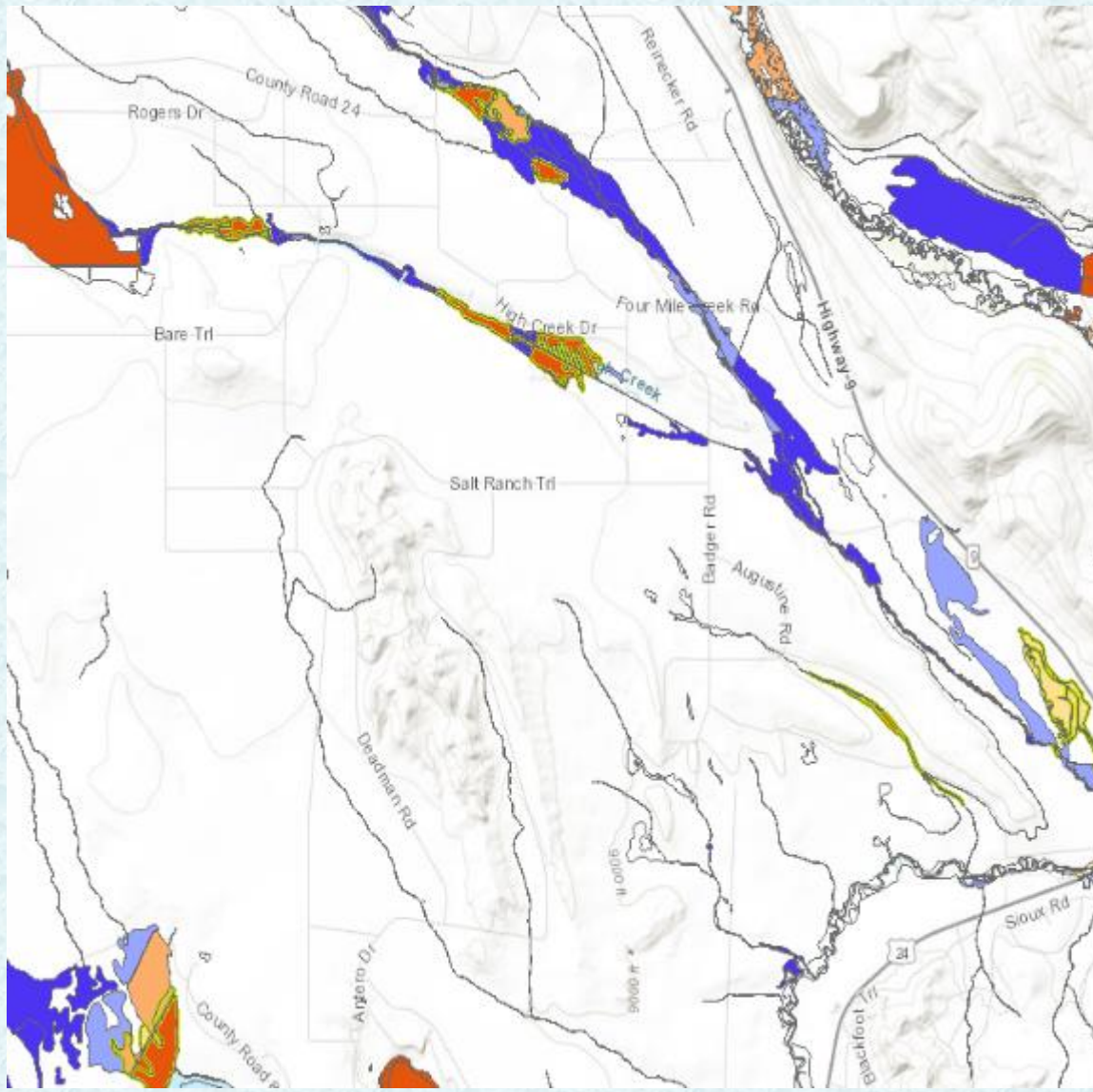
ATTRIBUTE PFO1C
 WETLAND_TYPE Freshwater Forested/Shrub Wetland
 ACRES 4.054329
 LANDSCAPE Lotic River
 LANDSCAPE1
 LANDFORM Floodplain
 LANDFORM1 Basin
 WATERBODY
 WATERFLOWPATH Throughflow
 LLWW LRFpbTH
 Flood Water Storage 2
 Zoom to

CP Project Boundary: IN_NWL_V2_LLWFA

Filter by map extent Zoom to Clear selection Refresh

TRIBUTE	WETLAND_TYPE	ACRES	LANDSCAPE	LANDSCAPE1	LANDFORM	LANDFORM1	WATERBODY	WATERFLOWPAT	LLWW	Flood Water Storage	Stream Flow Mtrce	Nutrient Transformation	Sediment Retention	Shoreline Stabilization	
O1C	Freshwater Forested/Shrub Wetland	1.710473	Lotic River		Floodplain	Basin		Throughflow	LRFpbTH	2	1	2	2	2	2
O1C	Freshwater Forested/Shrub Wetland	0.183948	Terrene		Basin			Vertical Flow	TEBAVR	2	0	2	2	0	0
O1A	Freshwater Forested/Shrub Wetland	0.176489	Lotic Stream		Floodplain	Plet		Throughflow	LSFPHTH	2	1	1	2	2	2

area 0 selected



Legend ⤴ ✕

Project Area

Watershed Planning Toolbox Project Area

Wetlands & Waterbodies

Wetland Boundaries and Labels

Toolbox Project Area Wetlands

Natural Characteristics (LLWW)

Fen wetlands
 Fens

Biodiversity & Wildlife Habitat Functions

Biodiversity Conservation

- Rare Species and Ecosystems, High Landscape Condition
- Rare Species and Ecosystems, Moderate Landscape Condition
- Rare Species and Ecosystems, Poor Landscape Condition
- High Biodiversity Support, High Landscape Condition
- High Biodiversity Support, Moderate Landscape Condition
- High Biodiversity Support, Poor Landscape Condition

Traditional Ecological Knowledge for Rapid Assessment Method

- Collect TEK
- Create RAM with Tribal Priorities weighted more heavily
- DU to develop field data collection app

***MBCI wetlands conservation efforts enhance, protect tribal wetlands,
and strengthen cultural ties between generations.***

Biodiversity Inventor Location



“Don’t reinvent the wheel.”

- Probably someone lazy with a high IQ

“Can I copy your homework?”

- Me



Jess Lewis

Mississippi Band of Choctaw Indians

Jessica.lewis@Choctaw.org

601-663-7844

