

***What are the Choices and Benefits? Matching Objectives  
to Programs and Getting Additional Help  
-Complementary Programs-***

**Presented by Ted LaGrange, Nebraska Game and Parks Commission**



**Nebraska Game and Parks Commission is our state's wildlife agency**

**I work as the Wetland Program Manager in the Habitat Partners section  
*Focus is on private lands and partnerships***





Nebraska





# Different Types of Wetlands



# Different Types of Social/Economic Drivers



*Photo by: Shelly Kelly, Sandhills Task Force*





**Need to tailor the actions to the wetland type and local heritage and economy**



# Many wetlands are highly altered



# Most wetlands need management



**Wetland restoration and management is often complicated**

**When you reach the edge of your knowledge---  
get help!**



# Need input from different disciplines



# Bio-engineering Teams



# **Need for a Partnership Approach**

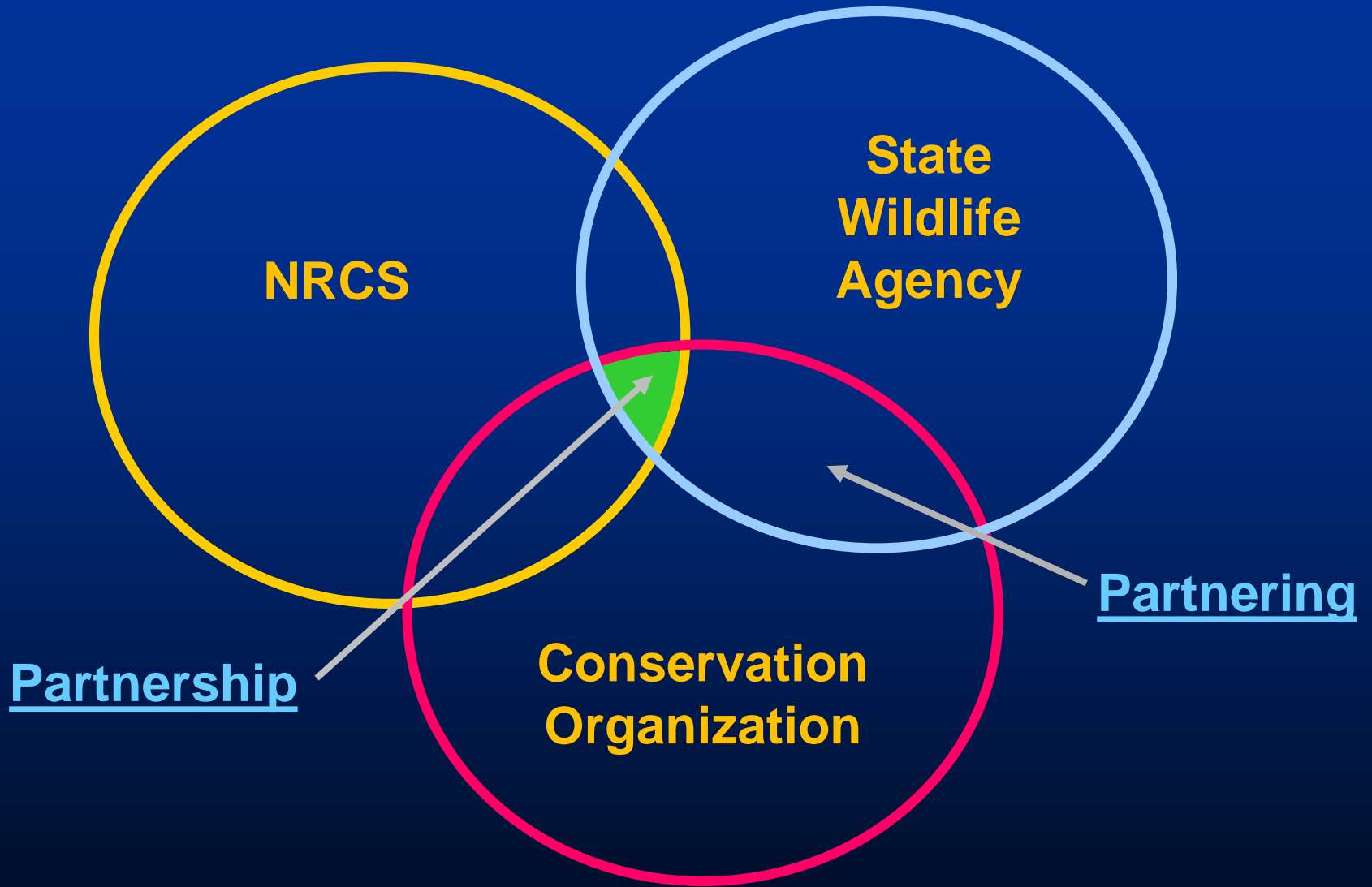


***The whole can be more than  
the sum of its parts***

# Partnering vs. Partnership

both have their role





**NRCS**

**State  
Wildlife  
Agency**

**Conservation  
Organization**

Partnership

Partnering



**Successful partnerships are not forced from the top down**





**Sign this MOU  
and we'll all  
be happy**

Money is needed, but it is not all about the money!



## Successful, long-term partnerships require:

- **Social capital (relationships)**
- **Trust, communications, consistent participation**





US Army Corps of Engineers





<https://www.fws.gov/partners>



U.S. Fish & Wildlife Service

## Partners for Fish and Wildlife Program

Habitat and Resource Conservation

Search

Habitat and Resource Conservation Home

Kids and Educators

About Us

Clean Water Act Section 404

Coastal Barrier Resources Act

Coastal Program

Communication Towers

Fish and Wildlife Coordination Act

Hydropower Licensing

Marine Mammals

National Environmental Policy Act

National Wetlands Inventory

Oil and Gas

Partners for Fish and Wildlife Program

Sikes Act

Status and Trends

Transportation Planning

Water Resource Development Acts

Wind Energy

### Regional and State Contact Information

Click on the appropriate Region of the map below to find your Partners for Fish and Wildlife State Coordinator.



[FY2010 Accomplishment Report](#)

[About Us](#)

[Strategic Plan](#)

[Resources](#)

[Multimedia](#)

[Contact Us](#)

[FAQ's](#)

[Site Map](#)

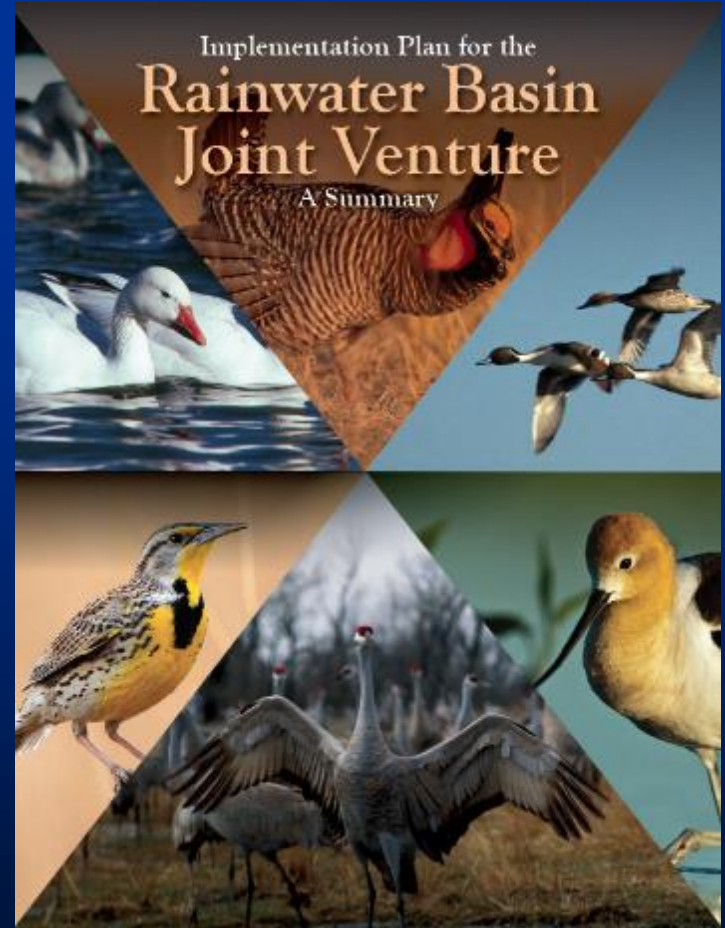
# Rainwater Basin Joint Venture



*Photo by: Niki Messmer*



*Photo by: Ryan Askren*



# Kissinger WMA



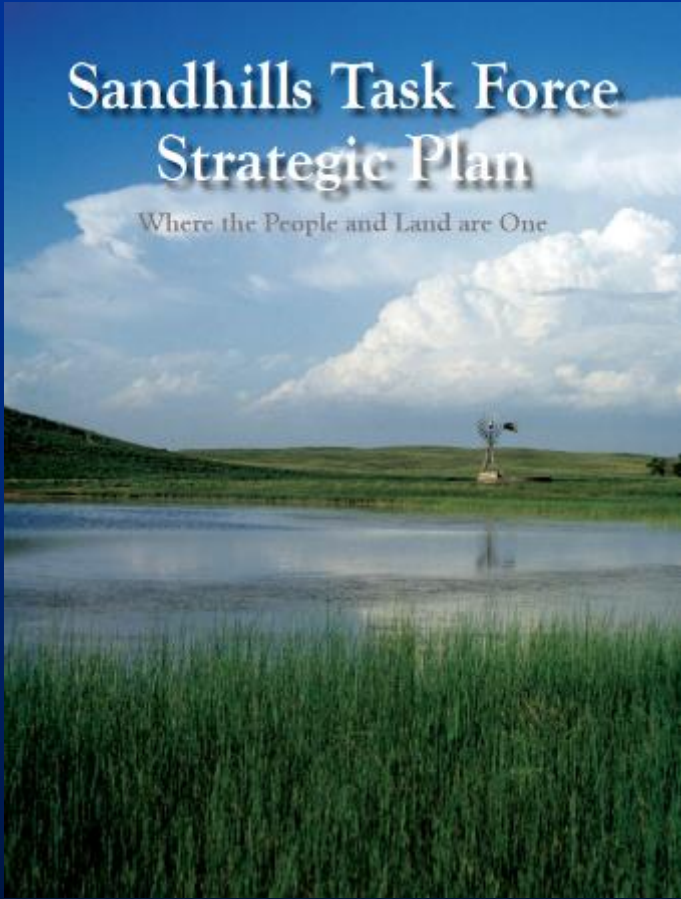
Pre-Restoration



Post-Restoration

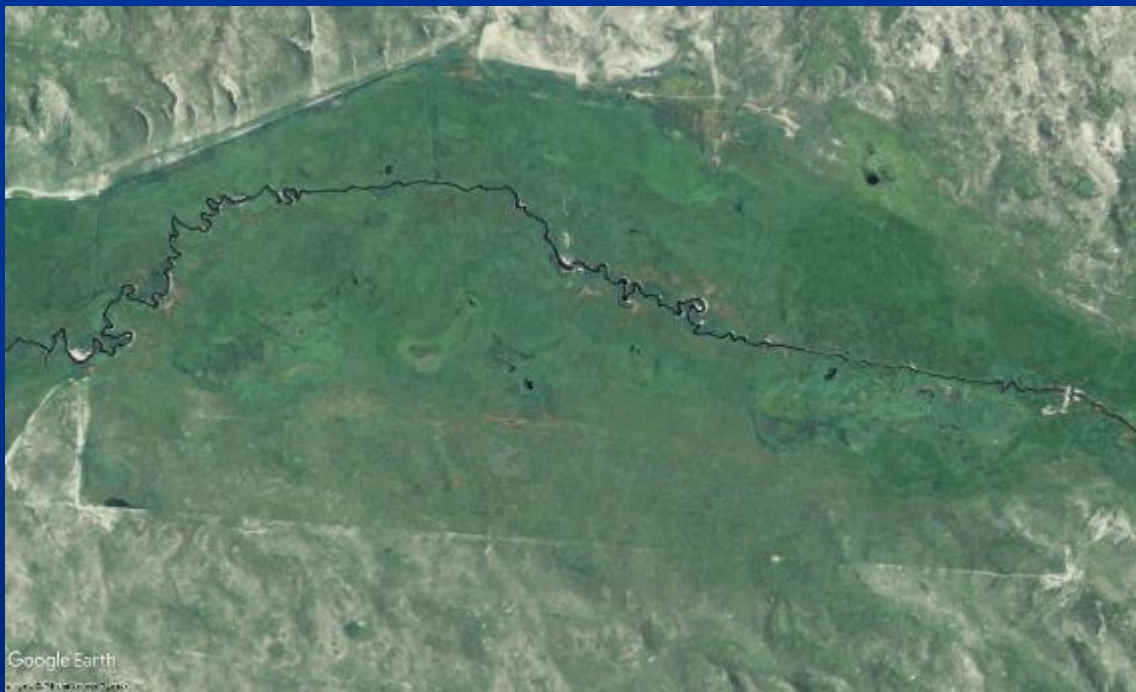


# Sandhills Task Force



# Gordon Creek

Pre-Restoration



Post-Restoration



# Saline Wetland Conservation Partnership

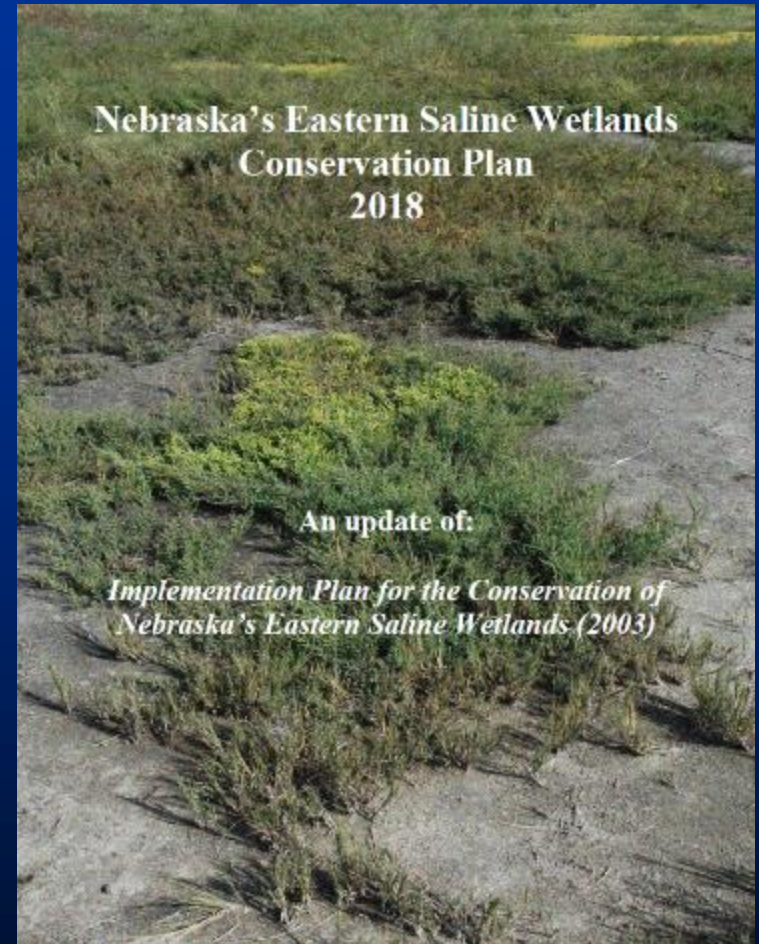


Photo by: Mike Forsberg



Pre-Restoration



Post-Restoration

**Jack Sinn WMA**

## Partnership Success Recommendations:

- **Need to focus on an area with similar natural and human resources**
- **Requires time and personal relationships**
- **Need an implementation plan**
- **Need a go-to person who is responsible for the success of the partnership**

**Although my familiarity is with Nebraska  
I know that there are great partners and partnerships  
throughout the country**



**Your State Wildlife Agency**

**<https://www.aswm.org>**

**<https://www.fws.gov/partners>**

**<https://mbjv.org/joint-venture-map>**



# Thank You!

[NebraskaWetlands.com](http://NebraskaWetlands.com)  
[ted.lagrange@nebraska.gov](mailto:ted.lagrange@nebraska.gov)

