

MASSACHUSETTS DEP WETLANDS PROGRAM UPDATE

Top successes in the past two years:

- Filing the wetlands resilience regulations for public comment
- Updating the stormwater regulations and stormwater handbook to address increasing precipitation
- Implementing Land Subject to Coastal Storm Flowage standards for floodplain resilience

Top challenge right now:

- Ongoing need for permit streamlining
- Finalizing the climate regulations

Highlighting a project for discussion and collaboration:

- Wetland mapping, update to statewide maps, carbon maps, climate vulnerability corridor maps, probabilistic maps



WETLANDS CLIMATE RELATED INITIATIVES

Wetland Resilience – Wetlands Protection Act Regulations Revisions

1. **Stormwater** Received 1,700 Stormwater comments (30 major categories, 141 sub-categories)
 - a) Reviewed all comments and incorporated changes
 - b) Major changes involve discharge rates, groundwater recharge, and pollutant removal
2. **Coastal** Received 1,030 comments (28 major categories)
 - a) Reviewed all comments and incorporated changes
 - b) Major changes involve the road elevation limited project, V-Zone prohibition, and flood control projects
3. Expected promulgation this winter

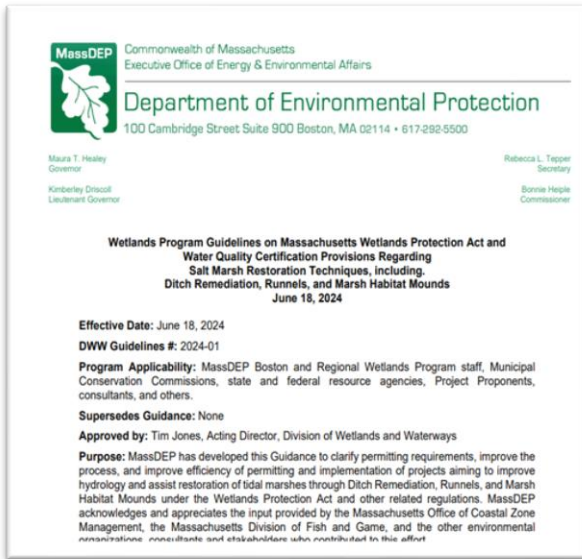
Next Phase of Revisions

1. Salt Marsh Restoration, Cranberry Bog Restoration, Invasive Species Removal, Trail Maintenance
2. Being prepared for public comment



WETLANDS CLIMATE RESILIENCE GUIDANCE

[Climate Resilience Guidance Documents | Mass.gov](#)



Guidance for Salt Marsh Runnels, Ditch Remediation and Marsh Islands

Published on web June 18th

Guidance for Thin Layer Placement in Salt Marsh

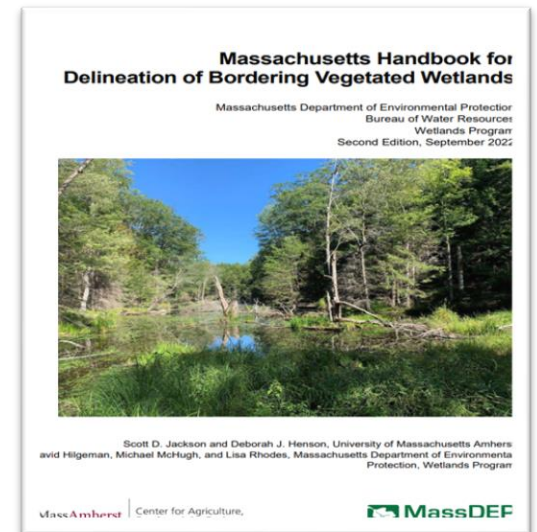
Held external stakeholder Info Session

Reviewed all submitted comments

Expected publishing soon

Massachusetts Handbook for Delineation of Bordering Vegetated Wetlands

- Updated September 2022



WEB BASED STREAM CROSSING PLANNING TOOL WILL HELP DESIGN AND MODEL RESILIENT STREAM CROSSINGS



Next session:

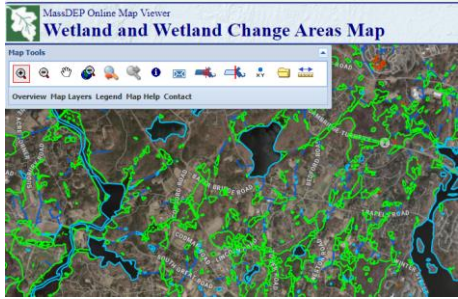
David
Hilgeman,
MassDEP

Gardner
Brent, USGS

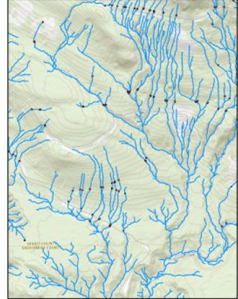
<https://www.mass.gov/doc/massachusetts-culverts-and-small-bridges-working-group-report/download>



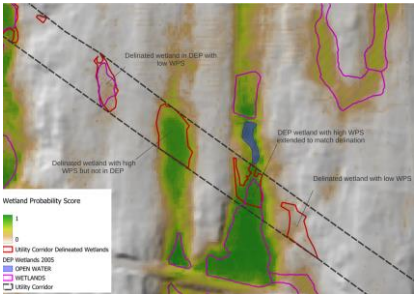
MASS STATEWIDE WETLAND MAPPING



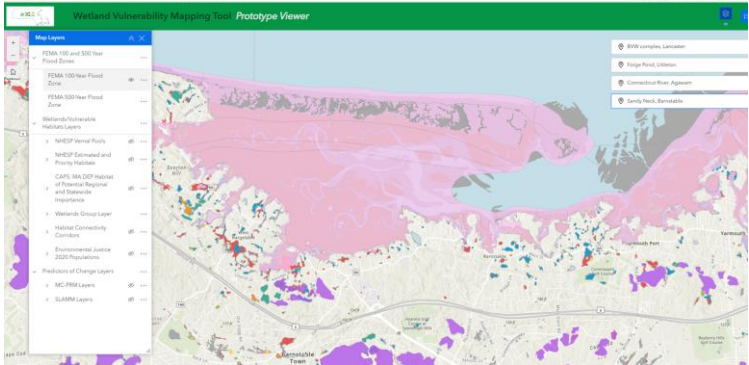
DEP Statewide wetland layer



Hydrography update to 3DHP



Carbon in wetlands



Vulnerability Corridor

