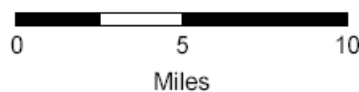
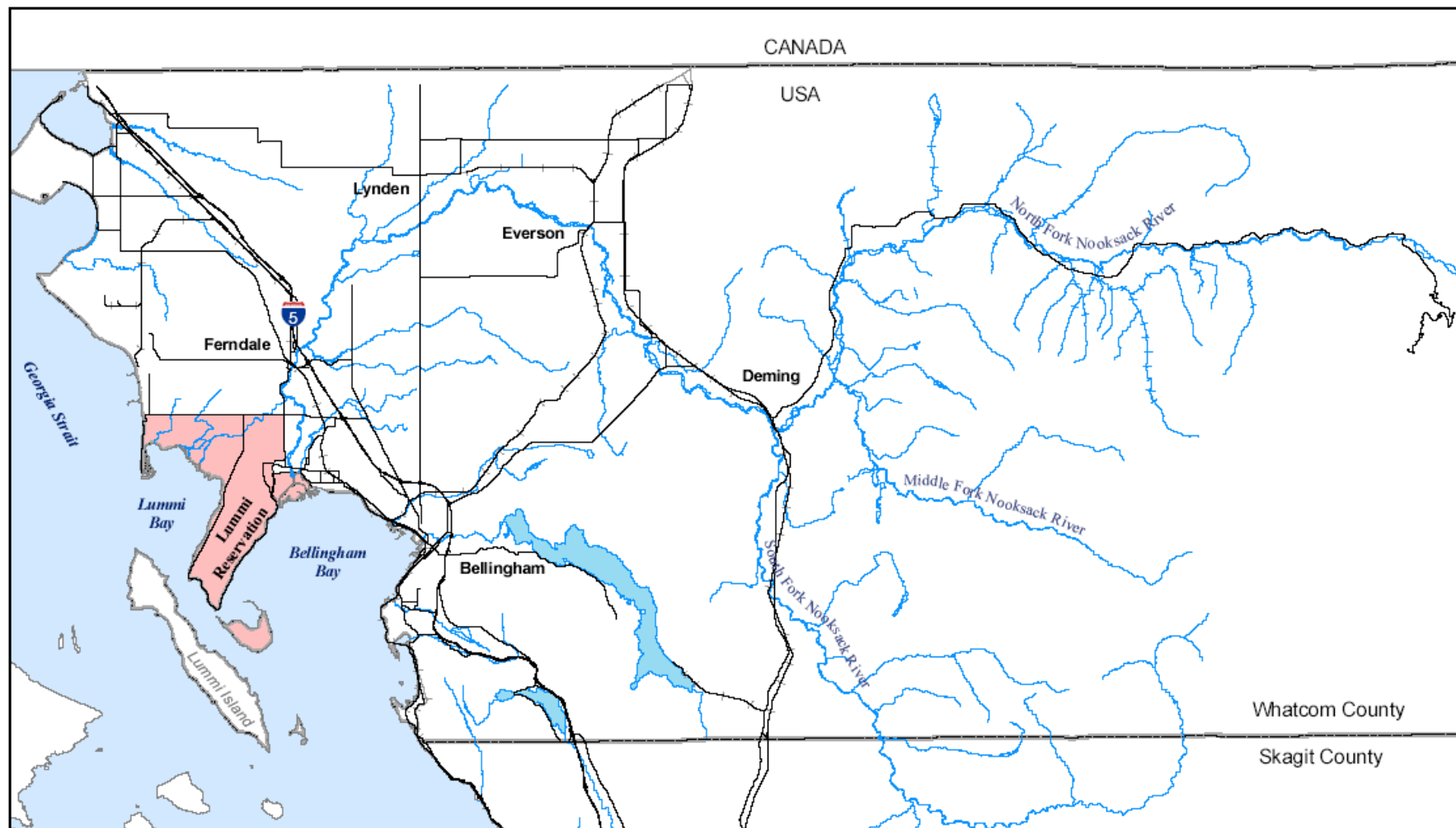




Lummi Nation Wetland & Habitat Mitigation Bank

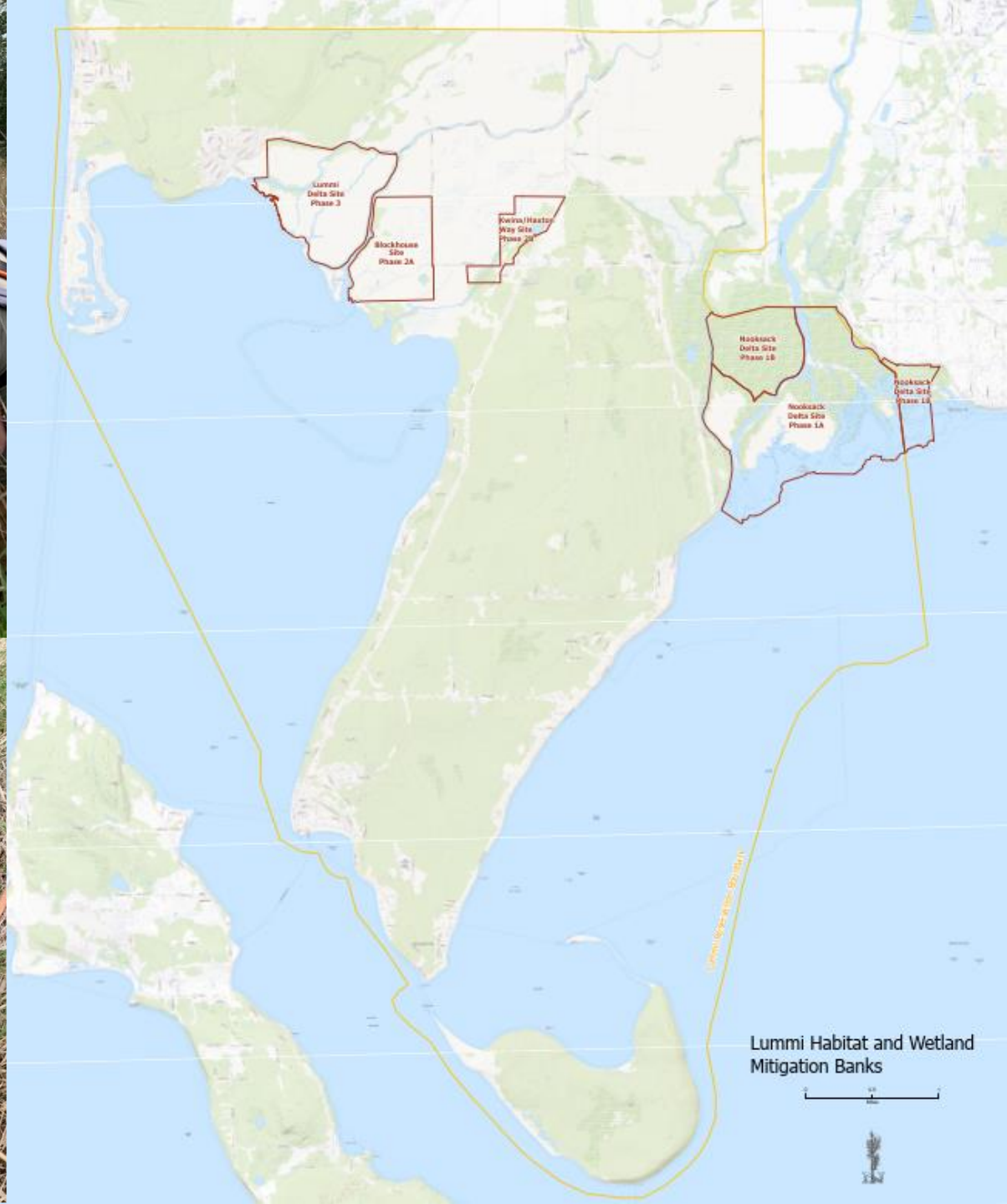
RESTORATION ECONOMY



For this map and all other maps in this document, Lummi Nation GIS Department makes no claim as to the accuracy, completeness, or content of any data contained herein. Any user of this data assumes all responsibility for use thereof and further agrees to hold the Lummi Nation harmless from and against any damage, loss, or liability arising from any use of this data. This map is not intended to reflect the exterior or tideland boundaries of the Lummi Reservation. No part of this document may be reproduced without prior consent of the Lummi Nation.



General Location Map of the Lummi Indian Reservation



Lummi Nation Wetland Habitat Mitigation Bank, the “Bank”

- Provides restoration economy to the Tribe while providing:
 - Flood protection
 - Pollution filtration
 - Wildlife habitat
 - Ecological lift



Flood Protection & Pollution Filtration

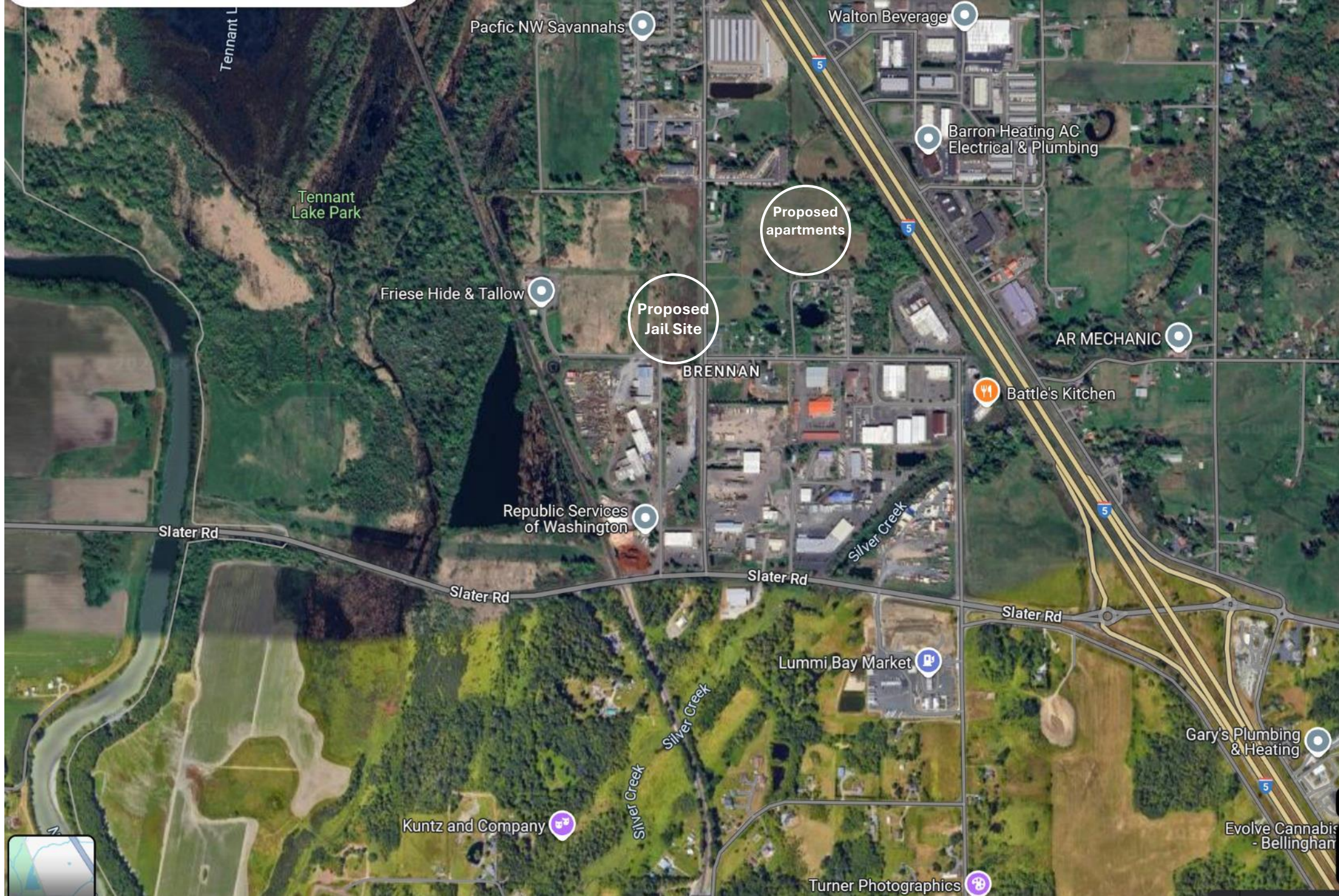






Mitigation Bank = Restoration Economy

Site	Credit Generating Activities	Acreage	Potential Credits
Nooksack Delta (Phase IA and IB)	Enhancement	1,179	239
Blockhouse (Phase II)	Re-establishment, Rehabilitation	374	249
Lummi Delta (Phase III)	Re-establishment, Rehabilitation	412	343
Total		1,965	831 ¹



48 townhomes,
14 live/work
units, +/-
188 multifamily
unit, +/- 3,000
square feet of
potential
commercial site,
and a
community
building with
0.539 acres of
wetland impact
requested

Let's talk about
stewardship of
the Bank!

Merle Jefferson, Sr. – LNR Executive Director



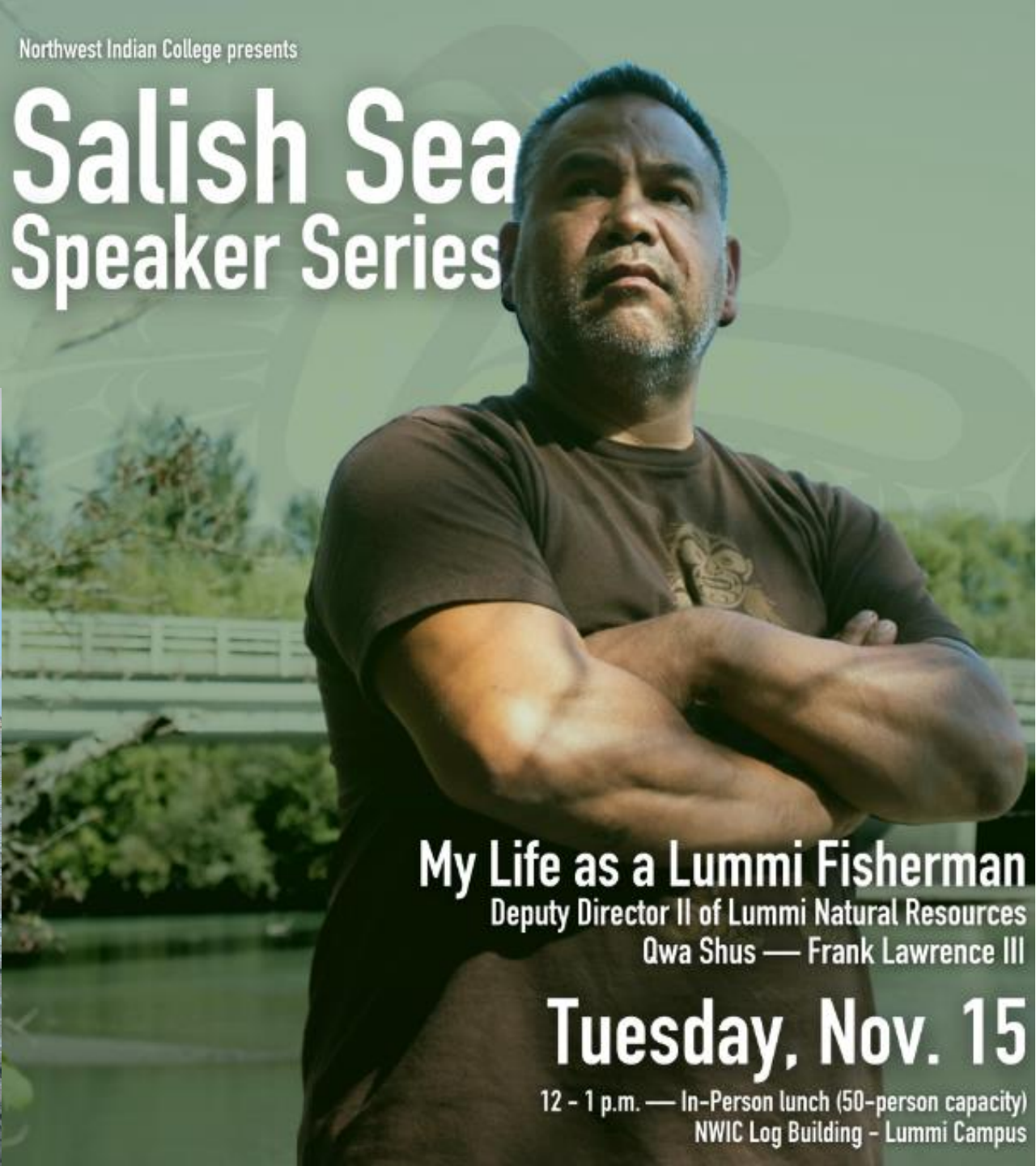
Northwest Indian College presents

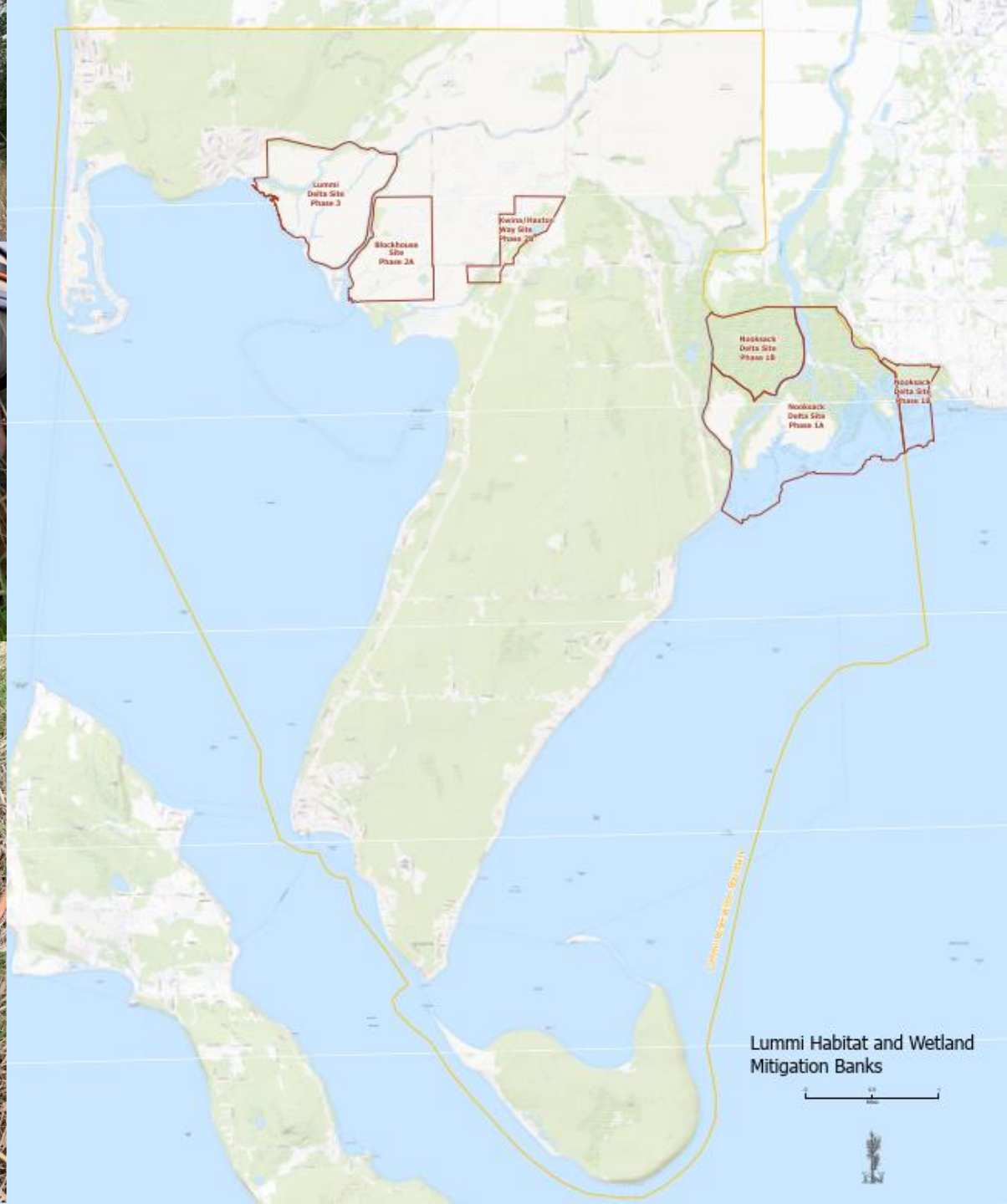
Salish Sea Speaker Series

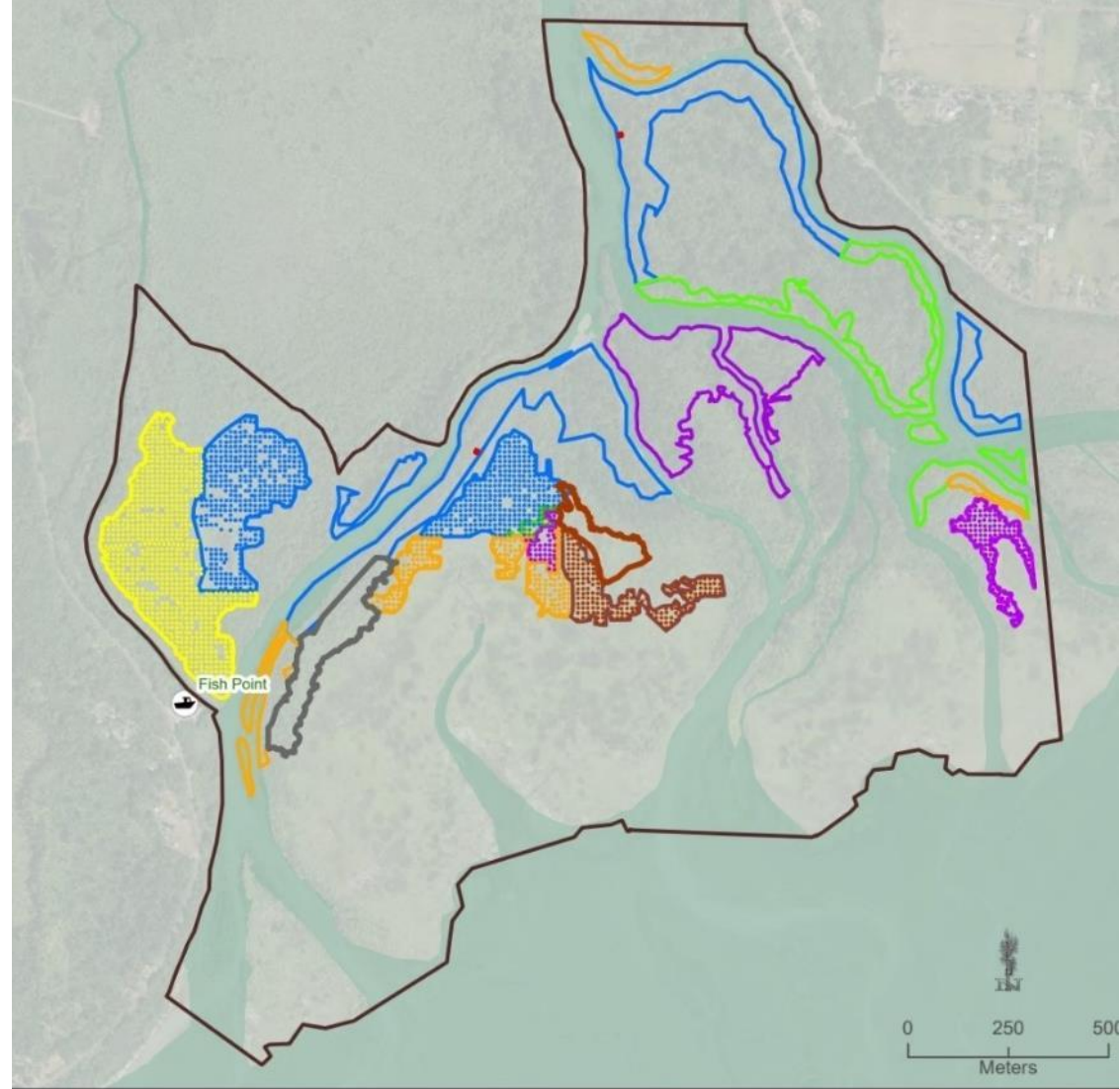
My Life as a Lummi Fisherman
Deputy Director II of Lummi Natural Resources
Qwa Shus — Frank Lawrence III

Tuesday, Nov. 15

12 - 1 p.m. — In-Person lunch (50-person capacity)
NWIC Log Building - Lummi Campus







Lummi Nation Wetland and Habitat Mitigation Bank



Conifer Underplant Zones (Acres Treated)



20' dia. Willow Plot Locations





Nooksack main channel

Cork Stump Trail

0.5 miles

Proposed
2025 Conifers
7.2 ac

2024 Conifers
9.64 acres planted

12.1 ac

To Fish Point launch



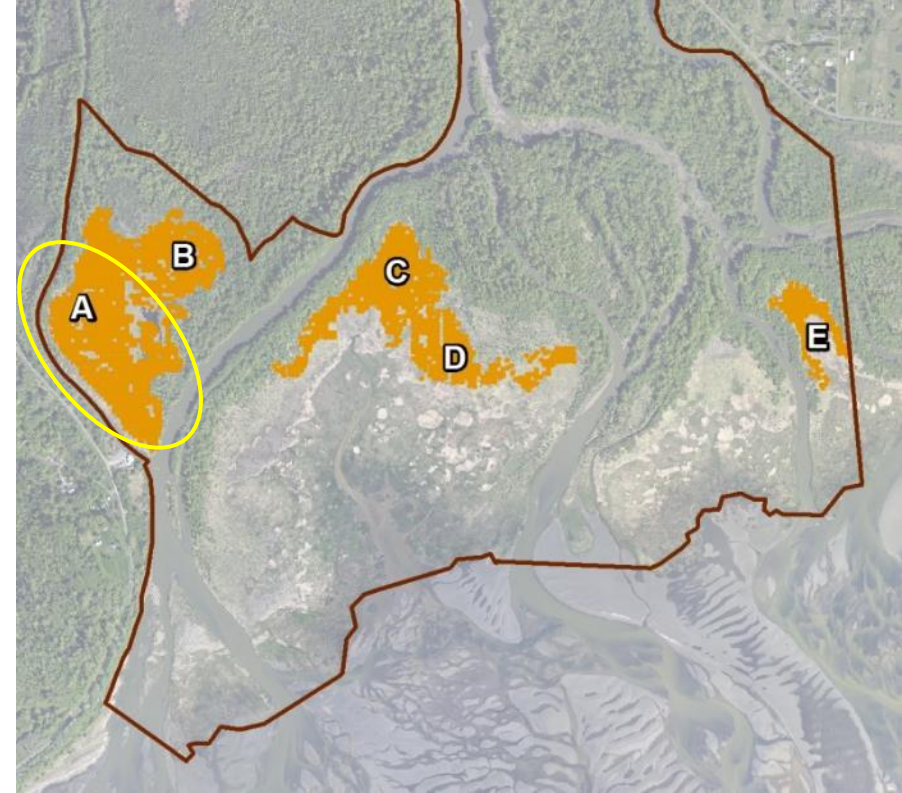


Successful
willows

Nooksack main channel

Not-so-successful willows

Kwina Slough



Year 10 monitoring of 2011 Willows

Hooker willow (*Salix hookeriana*)

October 2021

Photographed: Tyson Waldo – Northwest Indian Fisheries Commission







Lummi Natural Resources

Jamie Mattson

Water Resources Specialist III / Planner

JamieM@Lummi-nsn.gov

Jeff Solomon

Natural Resources Specialist II / WHMB Lead Steward

JeffreyS@Lummi-nsn.gov